

Can your stoneware or porcelain piece be TL tested?

The drill bit used for core sampling stoneware and porcelain is 4mm in diameter, and two samples 5mm in depth are needed from each piece. Samples are usually taken from unglazed areas, such as the bottom or foot rim, but there needs to be enough area to accommodate safe sampling.

您的炻器(stoneware)和瓷器(porcelain)藝品有經過TL測試嗎？

以直徑4mm的鑽頭(drill bit)對炻器和瓷器進行核心取樣(core sample)，每件藝品需要抽取兩份深度5mm的樣本，取樣部位通常為未上釉(unglazed)之處，例如底部和圈足(foot rim)，不過，取樣部位要夠大，才能妥善地取樣。

Please see the images below to help you understand our requirements.
為了讓您明白我們的需求，請見下圖：

This is a cross section of a small bowl.
碗的橫斷面



The drill bit we use for core sampling is 4mm in diameter, and two samples 5mm in depth are required from each piece.

There needs to be need enough area to accommodate safe sampling.

此乃一個小碗的橫斷面。
我們用來進行核心取樣的鑽頭直徑為4mm，應自每件藝品上取兩份深度5mm的樣本。
妥善取樣需要足夠的空間。

鑽頭 進行鑽孔處沒有足夠的素材



該處太薄，無法鑽孔

The foot rim of this piece is 3.37mm and is too thin to allow drilling.

This piece would be rejected for testing.

該藝品的圈足厚度為3.37mm，厚度太薄以致於無法鑽孔。
該藝品被拒測。

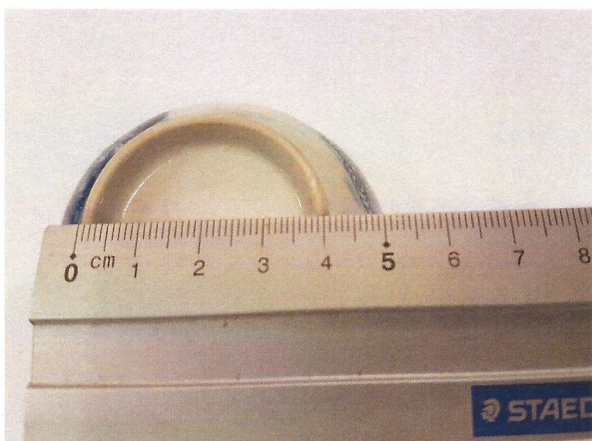
To avoid rejection of your piece at the time of sampling we must first determine whether or not your piece can be sampled safely.

How can we know if your piece can be sampled safely?

We need photos of your piece with measurements.

Please send us photos of your piece with measurements like the ones below.

為了避免您的藝品在測試過程中遭到拒測，首先必須確認您的藝品是否能夠妥善受測。我們要怎麼知道您的藝品是否能夠妥善受測呢？我們需要您提供藝品照片，並附上可供參考的測量標準。請您將藝品照片寄給我們，照片應如下圖所示附上測量標準。



Please place the ruler as shown in this picture to help us understand the thickness of the foot rim of your piece.

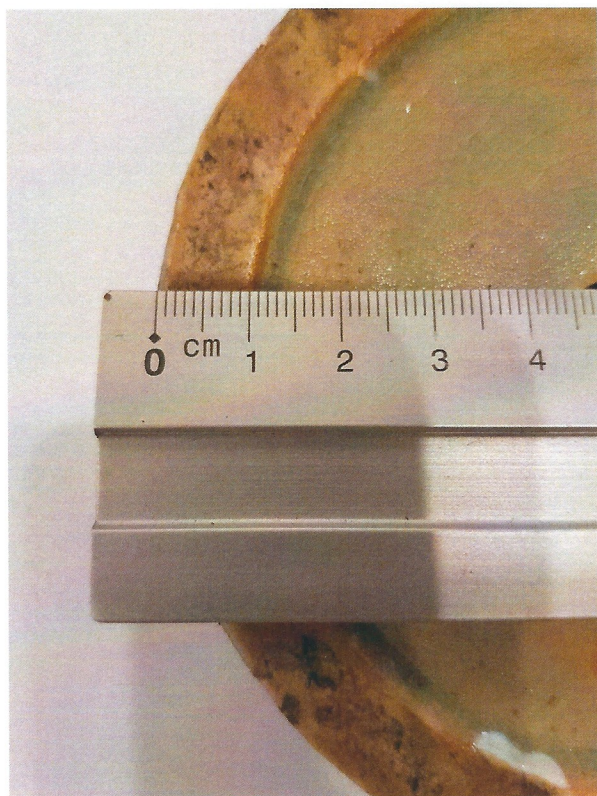
Please note, the ruler is placed correctly in this picture.

請如圖中所示擺放量尺，讓我們了解藝品圈足的厚度。



ANTIQUE AUTHENTICATION

authenticating antiques
through science



The foot rim of this piece is 10mm and is thick enough to accommodate two samples 5mm in depth taken with our 4mm diameter drill bit.

This piece can be sampled safely and can be TL tested.

請留意量尺是否如圖所示正確擺放。
該藝品圈足的厚度為10mm，容許我們以直徑4mm的鑽頭進行兩次深度5mm的取樣。
因此，我們可以妥善地於此藝品上取樣，並進行TL測試。